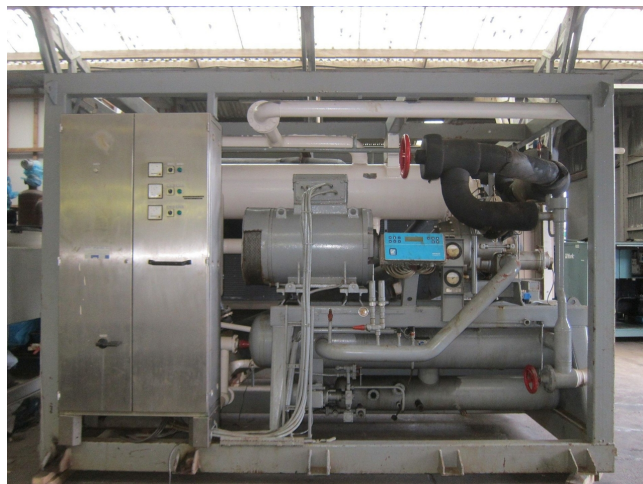


Sabroe SAB 163 HF MK3

Specifications

Brand	Sabroe
Type	SAB 163 HF MK3
Product type	Water Cooled Chiller
Capacity kW	944,5*
Capacity Tons	268.4
Refrigerant	Freon
Sizes	4300x3000x2700 mm (LxWxH)
Remarks	Compressor y.o.b. 2005
Remarks	*Capacity based on +20°C Sea Water (Condensing Temp: +27,9°C / Suction Pressure: -4°C
Remarks	RSW unit used for Sea Water
Stock	1



Description

Used Sabroe SAB 163 HF MK3

Used Sabroe RSW (refrigerated sea water system). These systems are used onboard fishing vessels to preserve large catches. In a minimum time, the catch is cooled to close to the freezing point of seawater, ensuring freshness and quality during transport. This unit is capable of chilling 37 tons of sea water from 20°C to 0°C per hour or 23 tons from 32°C to 0°C per hour. This unit has a Sabroe SAB 163 H-F MK3 screw compressor and is direct driven by a 300 kW electric motor. Compressor has an Unisab II controller. Condensor is a horizontal shell and tube with a waterflow of 250 m³/h. Liquid receiver made of steel has a volume of 65 liters. Liquid separator also made of steel has a volume of 1900 liters. Evaporator is a compact shell

and tube special sea water resistant.
The refrigerant circulates/evaporates
inside the tubes and the sea water
circulates outside and across the cold
tubes.

